

Veni Sancte Spiritus

K. 47

Text: from Antiphon *Ad invocandum Spiritum Sanctum*, author unknown.

Allegro [$\text{♩} = c. 96$]

*ORGAN/
PIANO

PREVIEW ONLY

7

SOPRANO

TUTTI [*f*]

ALTO

TUTTI [*f*]

TENOR

TUTTI [*f*]

BASS

TUTTI [*f*]

PREVIEW ONLY

Ve - ni, ve - ni, ve - ni San - cte Spi - ri -
 Ve - ni, ve - ni, ve - ni San - cte Spi - ri -
 Ve - ni, ve - ni, ve - ni San - cte Spi - ri -
 Ve - ni, ve - ni, ve - ni San - cte Spi - ri -

13

-tus, ve - - - ni, ve - ni San - cte Spi - - ri -
 -tus, - - - ni San - cte Spi - - ri -
 -tus, ve - ni, ve - ni, ve - ni San - cte Spi - - ri -
 -tus, ve - ni, ve - ni, ve - ni San - cte Spi - - ri -

PREVIEW ONLY

Banks
Music
Publications

* Mozart's accompaniment is for an orchestra of oboes, horn, trumpets, timpani and strings with organ continuo. This organ/piano part is a transcription and is therefore unfigured; the original vocal and instrumental slurring has not been changed.

Venite, populi

Offertorium de venerabili sacramento K. 260 (248a)

Text: non-liturgical,
author unknown.

Allegro [$\text{♩} = c. 96$]

SOPRANO I
ALTO I
TENORI I
BASS I
SOPRANO II
ALTO II
TENORI II
BASS II

PREVIEW ONLY

f Ve - ni - te,
f Ve - ni - te,
f Ve - ni - te,
f Ve - ni - te,
f Ve - ni - te, po - pu - li, ve - ni - te,
f Ve - ni - te,
f Ve - ni - te,
f Ve - ni - te,

*ORGAN/
PIANO

Allegro [$\text{♩} = c. 96$]

f

PREVIEW ONLY

4

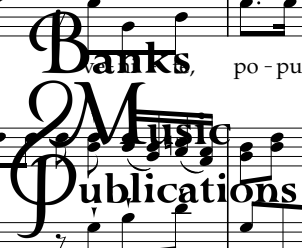
po - pu - li, ve - ni - te, ve - ni - te, po - pu - li, ve - ni - te, ve - ni - te, ve - ni - te, de
po - pu - li, ve - ni - te, ve - ni - te, po - pu - li, ve - ni - te, ve - ni - te, ve - ni - te, de
po - pu - li, ve - ni - te, ve - ni - te, po - pu - li, ve - ni - te, ve - ni - te, ve - ni - te, de
po - pu - li, ve - ni - te, ve - ni - te, po - pu - li, ve - ni - te, ve - ni - te, ve - ni - te, de
ve - ni - te, po - pu - li, ve - ni - te, ve - ni - te, ve - ni - te, de lon - ge
po - pu - li, ve - ni - te, ve - ni - te, po - pu - li, ve - ni - te, ve - ni - te, de lon - ge
po - pu - li, ve - ni - te, ve - ni - te, po - pu - li, ve - ni - te, ve - ni - te, de lon - ge
po - pu - li, ve - ni - te, po - pu - li, ve - ni - te, ve - ni - te, de lon - ge

PREVIEW ONLY

f

tr

* Mozart's accompaniment is for an orchestra of three trombones, strings (without violas) and organ continuo. This organ/piano part is a transcription and is therefore unfigured.



Sancta Maria, mater Dei

K. 273

Text: Antiphon for the Feast of the BVM, author unknown.

Allegro moderato [$\text{♩} = c.66$]

PREVIEW ONLY

SOPRANO
San - cta Ma - ri - a, ma - ter De - i, e - go o - mnia ti - bi de - be - o.

ALTO
San - cta Ma - ri - a, ma - ter De - i, e - go o - mnia ti - bi de - be - o.

TENOR
San - cta Ma - ri - a, ma - ter De - i, e - go o - mnia ti - bi de - be - o.

BASS
San - cta Ma - ri - a, ma - ter De - i, e - go o - mnia ti - bi de - be - o.

*ORGAN/
PIANO
PREVIEW ONLY

5

San - cta ma - ter De - i, e - go o - mnia ti - bi de - be - o

San - cta ma - ter De - i, e - go o - mnia ti - bi de - be - o

San - cta ma - ter De - i, e - go o - mnia ti - bi de - be - o

San - cta ma - ter De - i, e - go o - mnia ti - bi de - be - o

PREVIEW ONLY

9

sed ab hac ho - ra sin - gu - la - ri - ter, sed ab hac ho - ra sin - gu - la - ri - ter me

sed ab hac ho - ra sin - gu - la - ri - ter, sed ab hac ho - ra sin - gu - la - ri - ter me

sed ab hac ho - ra sin - gu - la - ri - ter, sed ab hac ho - ra sin - gu - la - ri - ter me

sed ab hac ho - ra sin - gu - la - ri - ter, sed ab hac ho - ra sin - gu - la - ri - ter me

Banks Music Publications

* Mozart's accompaniment is for strings and organ continuo. This organ/piano part follows the string parts and is therefore unfigured.

† †† Before the beat.